

DTC	C1761/61	ECU MALFUNCTION
------------	-----------------	------------------------

CIRCUIT DESCRIPTION

DTC No.	DTC Detecting Condition	Trouble Area
C1761/61	Suspension control ECU malfunction	• Suspension control ECU

INSPECTION PROCEDURE

HINT:

- If DTC C1774/74 (power source circuit) is displayed, perform the inspection necessary for DTC C1774/74 first (See page 05-272).
- DTC C1713/13 (right rear height control sensor circuit), C1714/14 (left rear height control sensor circuit) and C1761/61 (ECU malfunction) is are output at the same time, perform the inspection necessary for DTC C1761/61 first.

1 INSPECT HEIGHT CONTROL OFF INDICATOR LAMP

- (a) Turn the ignition switch to ON, and check the height control OFF indicator lamp.

Result:

A: Height control OFF indicator lamp come on

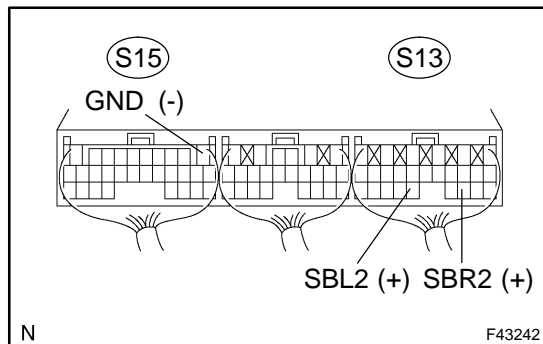
B: Height control OFF indicator lamp does not come on

B

CHECK AND REPLACE SUSPENSION CONTROL ECU (See page 01-35)

A

2 INSPECT SUSPENSION CONTROL ECU



- (a) Remove the suspension control ECU with connectors being connected.
- (b) Turn the ignition switch to ON, and measure voltage between terminal S13-20 (SBR2) and S15-1 (GND) and between S13-22 (SBL2) and S15-1 (GND) of the suspension control ECU connector.

Standard:

4.5 - 5.5 V

HINT:

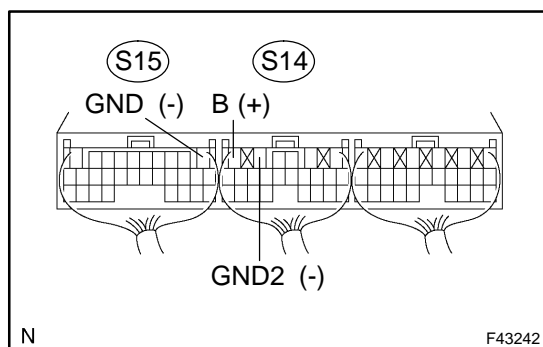
NG: Recheck the harness and connector of the power source circuit.

NG

CHECK HARNESS AND CONNECTOR (See page 01-35)

OK

3 INSPECT SUSPENSION CONTROL ECU



- (a) Remove the suspension control ECU with connectors being connected.
- (b) Turn the ignition switch to ON, and measure voltage between terminal S14-6 (B) and S15-1 (GND) and between S14-6 (B) and S14-5 (GND2) of the suspension control ECU connector.

Standard:

10 - 14 V

NG

REPAIR OR REPLACE HARNESS OR CONNECTOR

OK

CHECK AND REPLACE SUSPENSION CONTROL ECU (See page 01-35)